

208 TRANSFORMER WIRING DIAGRAM

208 transformer wiring diagram pdf

general electrical connection diagrams 156 acme electric † milwaukee, wi † 800.334.5214 † acmepowerdist.com acme® transformer™ wiring diagrams

Acme Electric - Dry-Type Distribution Transformers

1.800.428.2626 www.dongan.com 9 Single Phase - General Purpose Primary Volts 277, Secondary Volts 120 / 240 Primary Volts 208, Secondary Volts 120 / 240

Single Phase Transformers

*Transformers 15 kVA through 150 kVA are equipped with a 120 volt lighting tap. Lighting tap capacity is limited to Lighting tap capacity is limited to 5% of nameplate rating distributed equally on either side of XO.

Three Phase Transformers - Dongan - Fraser MI

Title: Driver and Transformer Connection Diagrams 10-19-16 Created Date: 10/19/2016 9:34:36 AM

Driver and Transformer Connection Diagrams 10-19-16

If you have any questions regarding these wiring diagrams or are having any difficulty correctly installing our transformers, please contact HPS customer service or technical support in the U.S. at 1-866-705-4684 or in Canada at 1-888-798-8882.

Wiring Diagrams - AutomationDirect

transformer that is designed to be used in a special purpose application and is unlikely to be used in general purpose application, such as ... sealed and non-ventilating transformer..." Three-Phase Resin-Filled Transformers

Low Voltage Transformers - Farnell element14

The diagrams on pages 42 through 45 are printed on the back panels of the mainframes. For your convenience, they are depicted here along with additional information. For information on input wiring for 30 AMP mainframes, contact D-M-E.

OPTION A 208 - 240 VAC, Three-Phase, 4-Wire Delta

12/24, 16/32, or 24/48 (depending on the model) use the wiring diagram located on the inside of the cover to the wiring compartment. If you are using this unit as an auto transformer to buck (lower) or boost (raise) the voltage by a 12 to 48 volts use the

BUCK-BOOST TRANSFORMER INSTALLATION SHEET

ple, if a distribution transformer has a primary winding with 7620 turns and a secondary winding of 120 turns and the source voltage equals 7620 volts, the secondary voltage equals 120 volts.

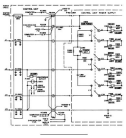
CHAPTER 15 DISTRIBUTION TRANSFORMERS - Professional

Wiring Diagrams ww introduction This booklet has been prepared as a guide to some of the useful ways Allen-Bradley's manual and magnetic across-the-line starters

GI-2.0: Typical Wiring Diagrams

systems commonly used in dry type transformers. Each is made of materials that will withstand a certain tempera- ture without shortening the life of the transformer. This means that regard-less of the insulation system used, transformers operating at their rated temperature rise will have essentially the same design life. Each insulation system will withstand the following average temperature ...

Dry Type Transformers - Siemens



208 TRANSFORMER WIRING DIAGRAM

bathroadtraders.co.uk

120 208 Three Phase Transformer Wiring Diagram To Panel from step up transformer 208 to 480 wiring diagram , Via :elsalvadorla.org Addressable fire alarm system is wiring diagram pdf home goodman furnace control board porsche 911 1999 ford f150.

61 Optimal Image Inspiration Of Step Up Transformer 208 to

transformer commonly used in pad-mounted transformers. The delta primary cancels out virtually all third harmonic The delta primary cancels out virtually all third harmonic components and multiples thereof that may be introduced in electrical transformation equipment or in lighting ballasts.

5) Flat Billing Ñ Certain applications involve service to

Wiring Diagram Book A1 15 B1 B2 16 18 B3 A2 B1 B3 15 Supply voltage 16 18 L M H 2 Levels B2 L1 F U 1 460 V F U 2 L2 L3 GND H1 H3 H2 H4 F U 3 X1A F U 4 F U 5 X2A R Power On Optional X1 X2 115 V 230 V H1 H3 H2 H4 Optional Connection Electrostatically Shielded Transformer F U 6 OFF ON M L1 L2 1 2 STOP OL M START 3 START START FIBER OPTIC TRANSCEIVER CLASS 9005 TYPE FT FIBER OPTIC PUSH BUTTON ...

Wiring Diagram Book - Daltco Electric

each transformer meets the requirements of NEMA ST-20, 1992. Type IP, QB and QMS models are C-UL listed. General-purpose transformers are rated 600 Volts and below for